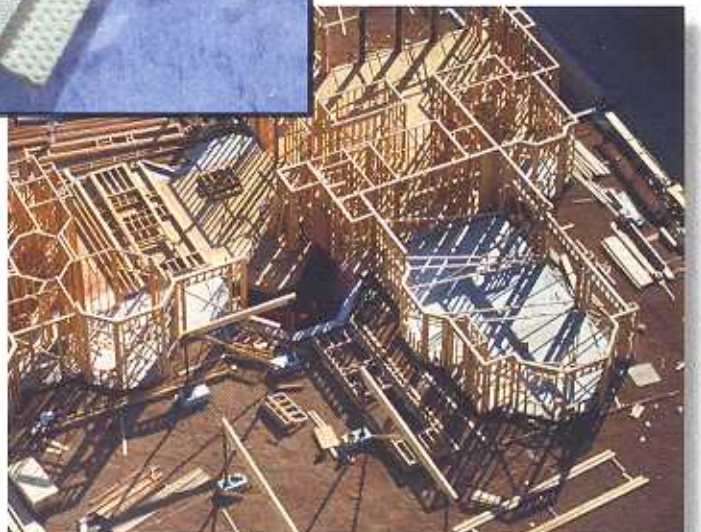
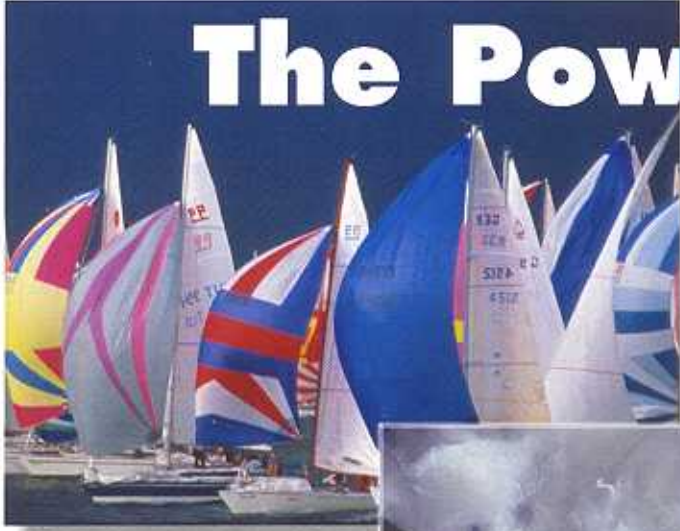




The Power Within™



If you use...	With this technology...	And look for...	We would advise...	Benefits...
A low viscosity resin with small percentage of fillers	Pultrusion	Perfect finish, anti print through, UV stability Shock resistance	VL56A	<ul style="list-style-type: none"> • Excellent resin wet-out, good fibre coverage
A low viscosity resin with small percentage of fillers	Pultrusion	Same as above, plus deep black finish	VL56ABK	<ul style="list-style-type: none"> • Allows less pigment add-on in resin preparation
A high viscosity resin and/or high filling agent contents	Pultrusion	Same as above, with resin rich surface and a visible surface veil	NLC10/350N NLC10/450	<ul style="list-style-type: none"> • Dimensional stability • Conformability
Any type of resin	Pultrusion	Same as above, plus perfect covering of the whole surface, particularly in multiple-angled shapes Deep colour	NLC10/351, NLC10/401 NLC10/450 NLC10/701 Sontara® 8010 (**)	<ul style="list-style-type: none"> • Follows any deformation and allows complex profiles • Gives excellent cosmetics
Corrosion resistant resin	Filament winding	Smooth inner and outer parts of pipes or vessels Crack reduction and chemical resistance	TS20, TS25, TS30, TS40 TFR40 (fittings) TFR45CO (conductive) TPS 60CO (conductive)	<ul style="list-style-type: none"> • Thin, binder free, extremely consistent • TFR line with reinforcing yarns
Corrosion resistant resin	Filament winding	Same as above Excellent corrosion resistance	Halar®	<ul style="list-style-type: none"> • Fibre composition : ECTFE • Chemically inert
Any type of resin	Filament winding	Cost-effective carrier/layer in non critical pipes and vessels Bubble free finished products	TPS40 NSN215 NSN320, NSN330	<ul style="list-style-type: none"> • Binder free • High tensile properties and open structure to allow air extraction
Several layers of reinforcement materials	Laminates	High shear strength and delamination properties	VL56A NLC10/701	<ul style="list-style-type: none"> • Acts as a reservoir and brings constant quantity of resin between each layer • Improves adhesion between layers
Any type of resin in sandwich constructions	Hand lay-up Closed mould	Bulk, anti print-through/better cosmetics, stiffness, shear strength	Matline® 1 to 5 mm (See specific range)	<ul style="list-style-type: none"> • Easy handling • Excellent resin wet-out • Multi-angle conformability

(**) Sontara not available in North and Latin America

Applications and product range are non-exhaustive. If you need any information on our worldwide distribution network / have any specific requirement, please contact us at :
PGI/NORDLYS - Industrial Division - Tel.: +33 (0)3 28 43 74 74 - Fax.: +33 (0)3 28 43 74 72 - e.mail : plouyji@pginw.com
 Web site : www.polymergroupinc.com